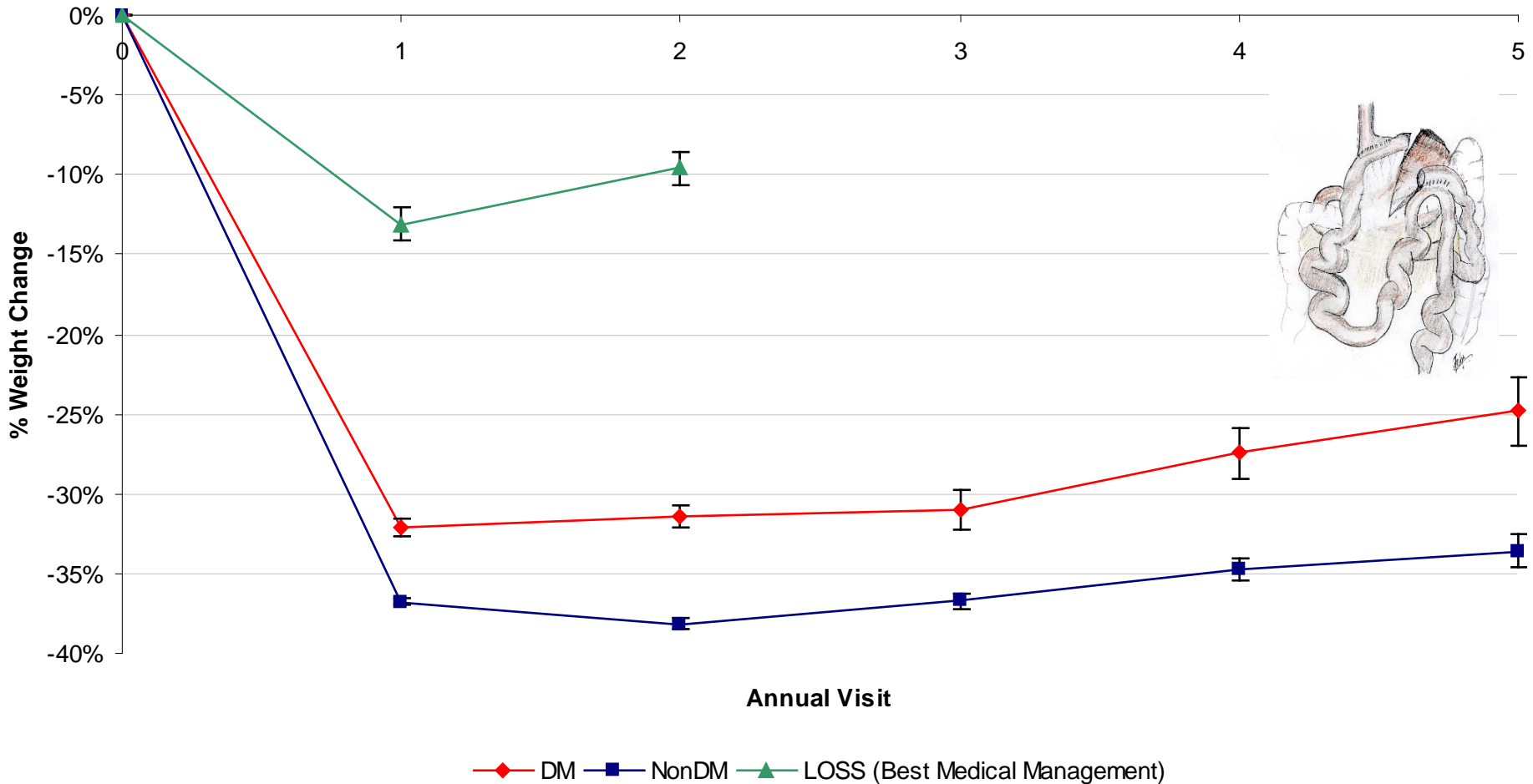


Dr. Sayeed Ikramuddin
Associate Professor of Surgery
University of Minnesota

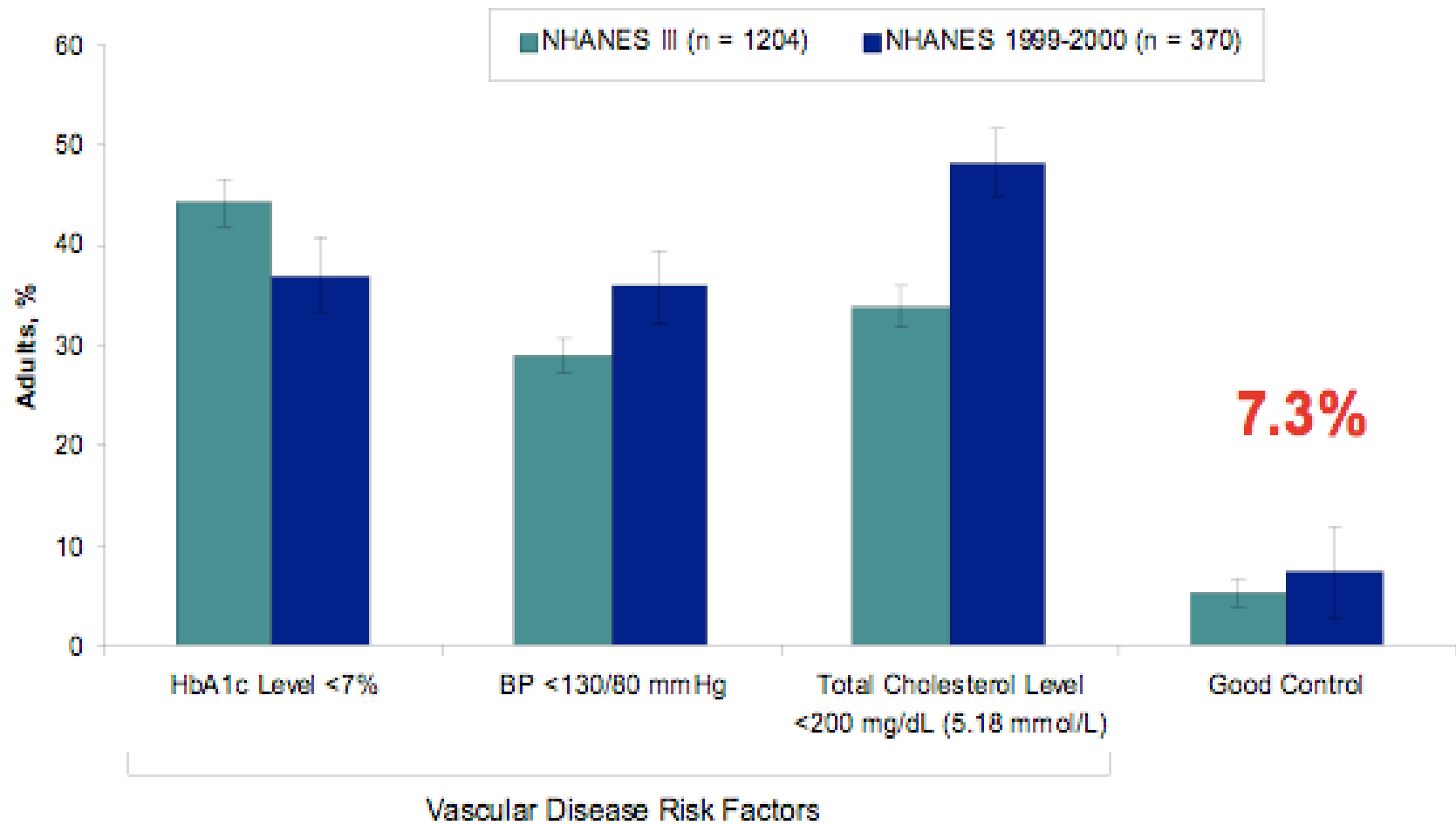


Creating a 21st Century Intelligent
Health System in Missouri

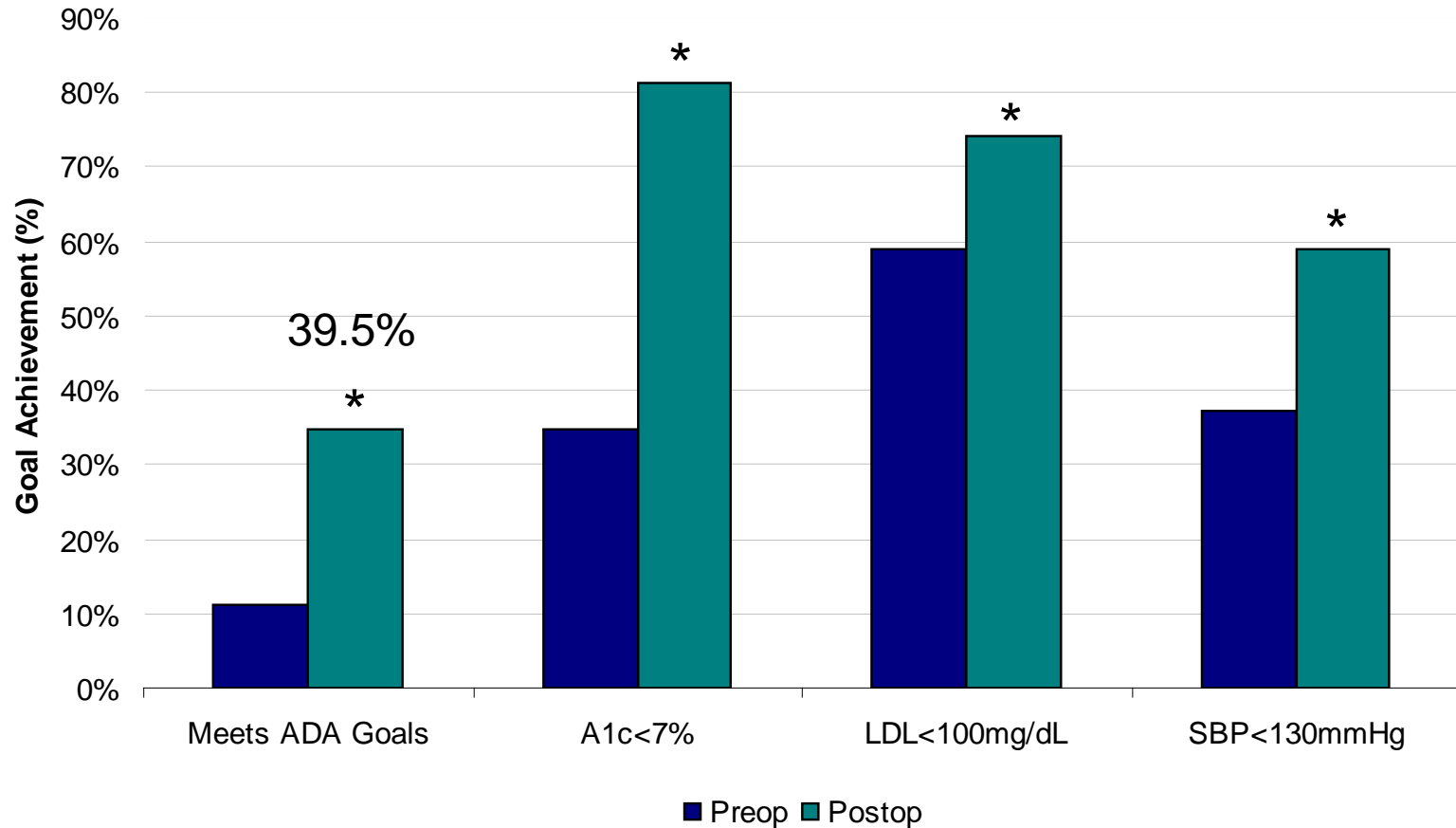
Weight loss after RNY



University of MN; Unpublished data



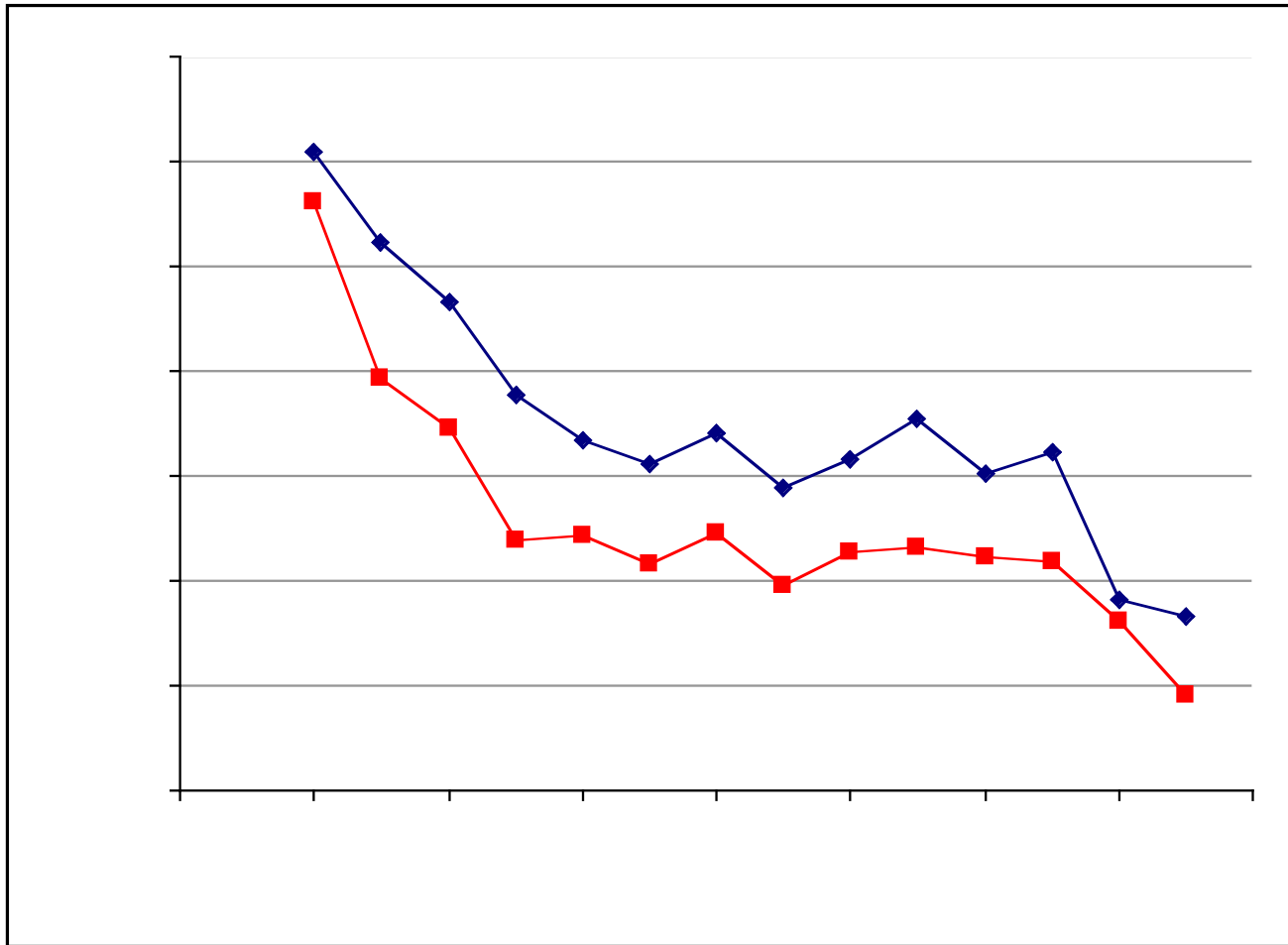
Outcomes RNY in Diabetics



• $p < 0.001$

University of MN; Unpublished data

The Challenge of chronic disease



University of MN; Unpublished data



Key Recommendations

- **Bariatric surgery is the best tool available for sustained weight loss in the obese diabetic population**
- **Success should be measured not only by weight loss reduction but also by co-morbidity resolution.**
- **Follow up for bariatric surgery should be lifelong**
- **Follow up should be a part of coordinated plan**
- **Statewide bariatric registry may be best option**